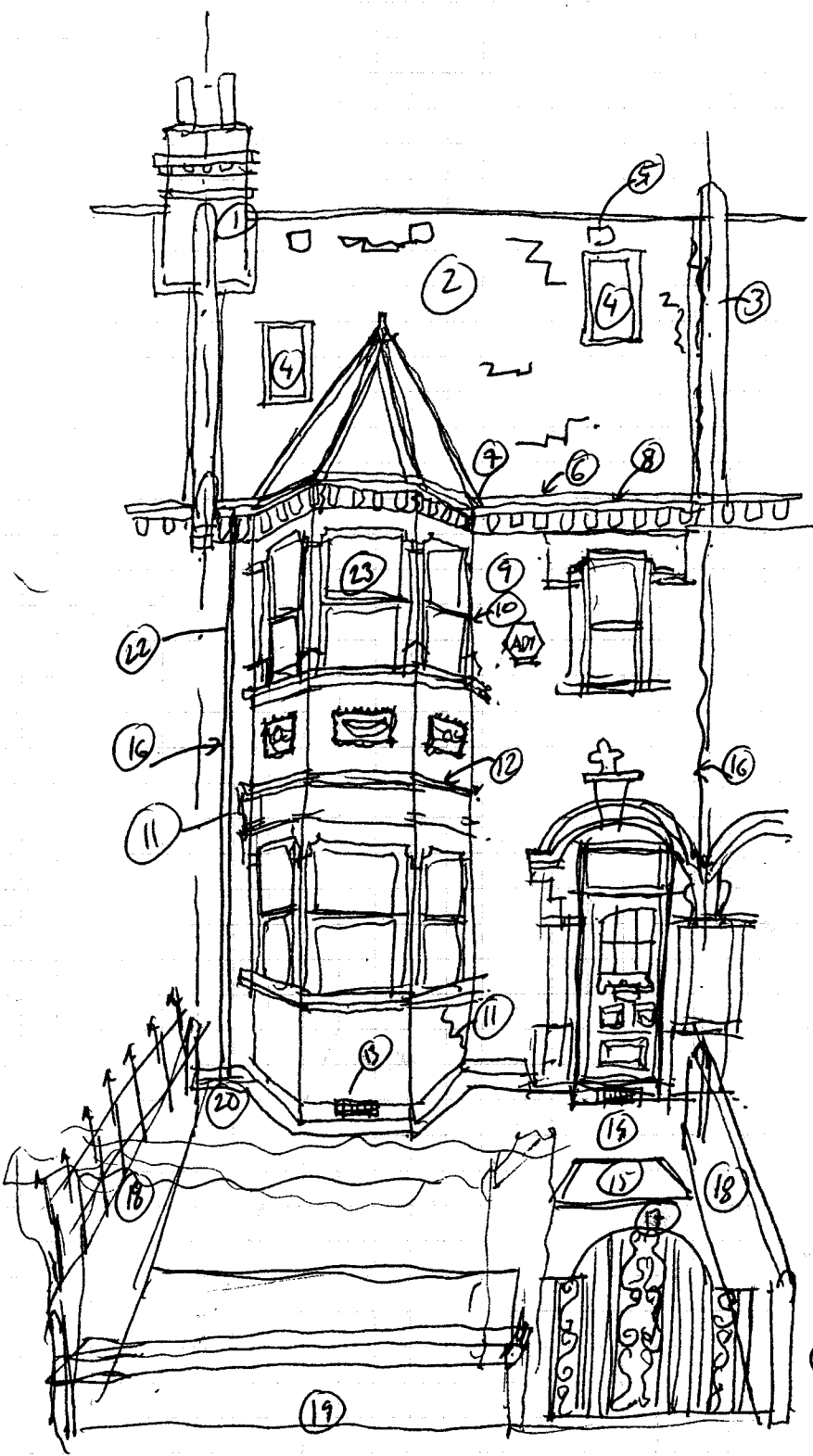


15/7/11



- ① CHIMNEY SOME MORTAR & TRAUCHING POINTING ELEVATION
- ② ROOF ORIGINAL SLATES - SOME CRACKED SOME SLIPPAGE.
- ③ RENDER HAS CRACKED VERTICALLY & HORIZONTALLY
- ④ Velux roof lights
- ⑤ ROOF VENTU
- ⑥ CAST IRON GUTTER SOME LEAK @ JOINTS
- ⑦ CRACKS @ INTERFACES NEEDS M/G + PAINTING
- ⑧ TIMBER GUTTER BOARD
- ⑨ FACING BRICKWORK - SOME PAINTING NEED. + ELEVATION OF BRICK
- ⑩ BAY INTERFACE MADE
- ⑪ CRACKS IN BRICKWORK.
- ⑫ STONE SILL - DRIP IS RENDERED - NEW HERE & REFORMED.
- ⑬ AIR BRICKS @ GOOD HEIGHT.
- ⑭ NEWLY PAVED ENTRANCE AREA.
- ⑮ MANTON'S
- ⑯ SOME LOOSE CABLING
- ⑰ GATE - TOP RUSTY.
- ⑱ PAINTED IN GOOD CONDITION
- ⑲ FRONT WALL + PRIVET FENCE GOOD CONDITION - SOME M/G @ BOTTOM.
- ⑳ GULLY NEEDS PROTECTION FROM LEAFS
- ㉑ DECORATION VERY RECENT.
- ㉒ PLASTIC RAIN WATER LIKE OIL.
- ㉓ SINGLE GLAZED REPLACEMENT SASH WINDOWS